



CUSTOMER SUCCESS STORIES

AEB Stuttgart Optimizes Global Trade and Logistics with EDB Postgres



AEB

CUSTOMER: AEB STUTTGART

EDB customer since: December 2022

Marian Schmöker

Database Administrator, AEB Stuttgart

CHALLENGE: AEB Stuttgart was facing a growing demand from customers for applications using open source Postgres.

EDB SOLUTIONS: EDB Community 360 with Premium Support

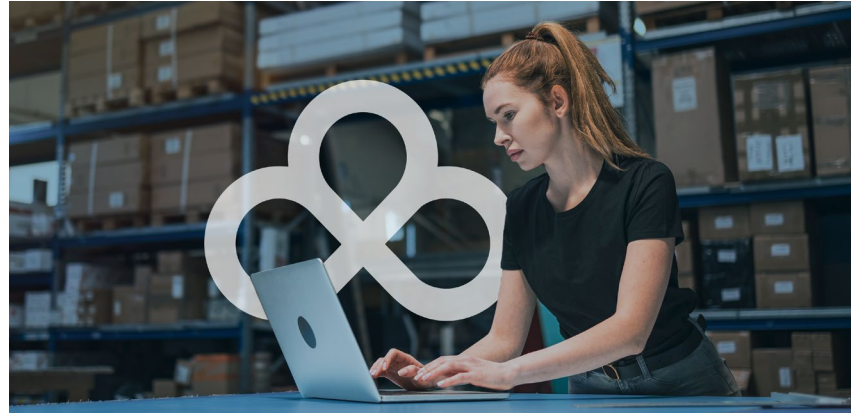
RESULTS: AEB was able to implement Postgres and offer dedicated support for Postgres databases and applications in its product line, enabling the company to better serve existing customers and attract Postgres-focused customers in the future.



OVERVIEW

Major logistics company supports compliant and efficient global trade operations with innovative applications on Postgres

As international trade increases, logistics processes have become increasingly complex to account for unprecedented supply chain events and disruptions, growing regulations, increasing documentation, sustainability issues, security risks, customs taxes, and more. A well-known name in the global trade industry, AEB offers intuitive solutions that are designed to automate and simplify these complex logistics operations and bring greater transparency, efficiency, cost reductions, and legal protection to supply chain management as a whole.



More than 7,000 customers in 80 countries use AEB's custom-tailored apps and cloud-based logistics platform to streamline shipping, transport, and warehouse management; customs clearance; import and export management; sanctions list screening; and export controls. AEB uses a variety of databases to suit these different applications. Lately, tech leaders at AEB have noted a growing demand from customers for applications using open source Postgres. While AEB develops most of its applications itself, many of its customers leverage third-party open source applications to facilitate supply chain resilience and increase trading opportunities. To better serve these customers and attract future-minded ones, AEB decided to implement Postgres and offer dedicated support for Postgres databases and applications in its product line.

“We wanted someone we could turn to in case of trouble, who not only had the knowledge of Postgres but also the ability to provide bug fixes.”

Marian Schmöker

Database Administrator, AEB Stuttgart

An easy path to EDB

Marian Schmöker, database administrator at AEB Stuttgart, says that getting Postgres up and running was simple. There were no surprises or challenges to implementing it. “It just works,” he says.

While Postgres is easy to use, Schmöker knew that AEB needed additional support in order to achieve the best results. “We wanted someone we could turn to in case of trouble, who not only had the knowledge of Postgres but also the ability to provide bug fixes,” says Schmöker.

When he researched Postgres support and discovered that EDB is the leading contributor to Postgres code and employs many of the world’s top Postgres developers, he didn’t hesitate to adopt EDB Postgres.

“All my research led me to EDB,” he says.

Avoiding vendor lock-in

While AEB has to use Oracle support for its Oracle products and Microsoft support for its Microsoft products, the company doesn’t face similar restrictions with Postgres. The development team appreciates Postgres’ open source nature and the fact that Postgres allows organizations to run modern applications everywhere. This flexibility is critical for developing new, innovative applications and attracting future-focused clients.

“Postgres is great because it’s free, it’s available in the community edition, and it has a lot of functions,” says Schmöker. “And there’s no vendor lock-in. That’s the most important thing.”

The future is Postgres

The AEB team also appreciated the simple and seamless process of provisioning Postgres servers or databases to developers and customers. "We can set up a new Postgres server or database and provide it to our developers or customers in our project teams very quickly. This is a huge advantage," says Schmöker. "And the data center operation is extremely stable."

For all these reasons and more, Schmöker sees AEB's usage of EDB Postgres expanding. "Our product managers are becoming more confident in migrating larger applications to Postgres," he says. "EDB's engagement and the assistance provided by its technical engineers make us feel well supported. It's been a highly successful partnership from the start."

"We can set up a new Postgres server or database and provide it to our developers or customers in our project teams very quickly. This is a huge advantage."

Marian Schmöker
Database Administrator, AEB Stuttgart



EDB provides a data and AI platform that enables organizations to harness the full power of Postgres for transactional, analytical, and AI workloads across any cloud, any time. For more information, visit www.enterprisedb.com.