



Breaking up with Oracle

Ajit Gadge, Field CTO- APJ
Manoj Vakeel, Professional
Services & Migration

Speakers

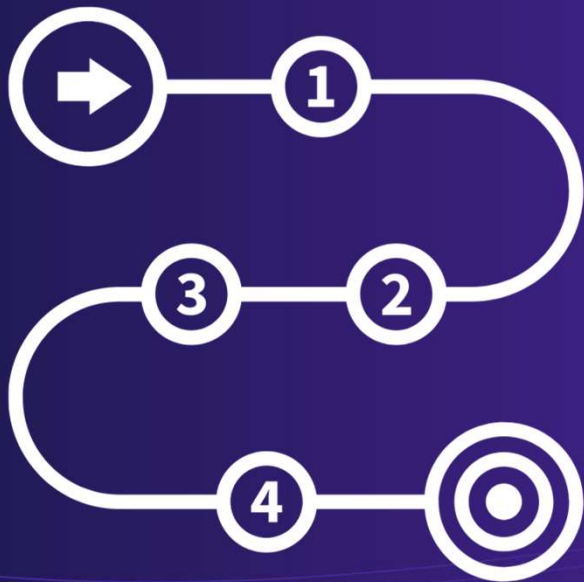


Ajit Gadge
Field CTO- APJ
EDB



Manoj Vakeel
Professional Services & Migration
EDB

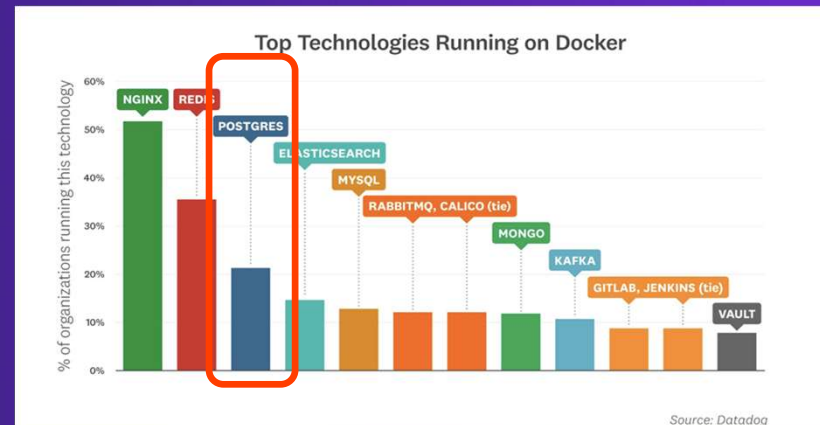
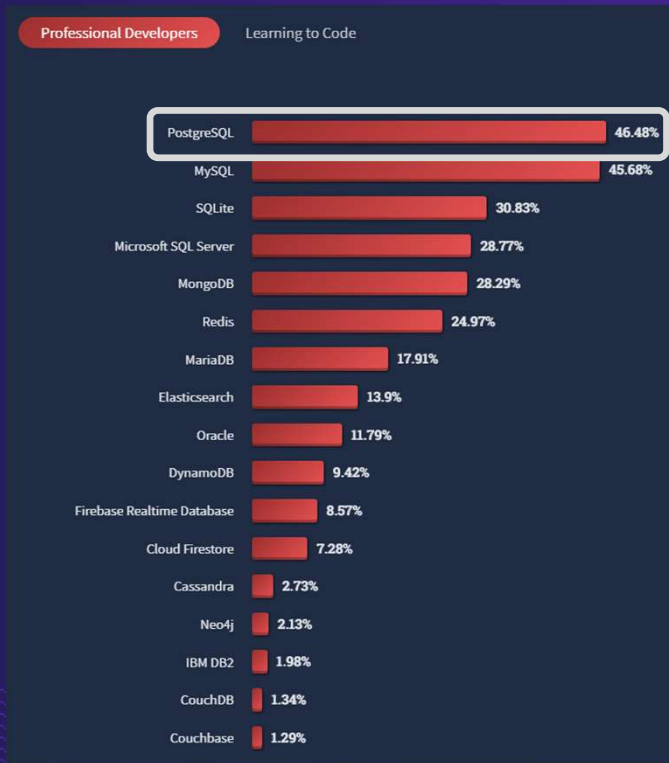
Agenda



- Postgres - winning the database game
- EDB - your Postgres partner
- Some stats about PL/SQL and Oracle migrations
- Steps and tools
- Hands on migration example
- Picking your first migration candidates
- Q&A



Postgres as the clear winner in the database game



The CNCF End User Community was asked to describe what their companies recommend for different solutions: Adopt, Trial, Assess or Hold. This table shows how the End User companies rated each technology.

Level	Name	Adopt	Trial	Assess	Hold
Adopt	Redis	~95%	~5%	~0%	~0%
	Elasticsearch	~85%	~10%	~5%	~0%
	PostgreSQL	~75%	~15%	~10%	~0%
	MySQL	~70%	~20%	~10%	~0%
	Kafka	~65%	~25%	~10%	~0%
Trial	Memcached	~55%	~35%	~10%	~0%
	MongoDB	~50%	~30%	~20%	~0%
	Cassandra	~45%	~35%	~20%	~0%
	Aurora	~40%	~30%	~30%	~0%
	Consul	~35%	~35%	~30%	~0%
	BigQuery	~30%	~35%	~35%	~0%
	CloudSQL	~25%	~35%	~40%	~0%
Assess	AWS DynamoDB	~20%	~35%	~45%	~0%
	MariaDB	~15%	~35%	~50%	~0%
	CockroachDB	~10%	~35%	~55%	~0%
Hold	Vitess	~5%	~15%	~80%	~0%

Cloud Native Computing Foundation Technology Radar



Stackoverflow 2022 Developer Survey

Postgres

the most transformative open
source technology since
Linux





EDB **builds Postgres**, alongside a vibrant independent community.

You have direct access to the people shaping the direction of the technology.

Building Blocks of Oracle Compatibility



SCHEMA



DATA



CODE



API



TOOLS

Part of the way
SCHEMA AND DATA ONLY



Most of the way
SCHEMA, DATA AND CODE



Almost there
SCHEMA, DATA, CODE AND INTERFACE



All the way
SCHEMA, DATA, CODE, INTERFACE AND OPERATIONAL TOOLS



EDB BigAnimal

- Managed Postgres Service
- Multi cloud and HA
- Native Oracle compatibility for Postgres

EDB Replication Server

- Data replication Oracle/Postgres
- Snapshot
- Change data capture

EDB Migration Portal

- Compatibility analysis
- Schema migration
- Stored procedure migration



Oracle Compatibility in EDB BigAnimal

EDB Postgres Advanced Server - Deep and wide native compatibility

- What are the areas of compatibility?
 - Oracle specific and syntax compatible database object types
 - Oracle specific data types
 - Oracle PL/SQL support as a built-in native procedural language
 - Oracle-like data dictionary views (i.e., ALL_, DBA_, USER_ views)
 - Oracle-like built in PL/SQL packages
 - Oracle-like database drivers
 - Oracle work-alike tools for DBAs
- What are the benefits of compatibility?
 - Significantly reduces the amount of time and effort required for a migration from Oracle
 - More schema, SQL, and code can run in Postgres without modification
 - Less schema, SQL, and code needs to be converted or rewritten
 - Eases the transition from Oracle to Postgres for Oracle DBAs and developers
 - Familiar database and application constructs and tools available to DBAs and developers



Oracle Compatibility Observations - Constructs

Practical findings

- Table and indexes are important
- But they are only a part of the challenge

Object type	Prominence
TABLE	28.78%
INDEX	20.41%
SYNONYM	15.74%
CONSTRAINT	9.39%
VIEW	6.91%
SEQUENCE	5.74%
TRIGGER	3.21%
PROCEDURE	2.96%
PACKAGE	2.74%
PACKAGE BODY	1.87%
FUNCTION	1.25%
TYPE	0.65%
MATERIALIZED VIEW	0.14%
TYPE BODY	0.10%
DATABASE LINK	0.08%
USER	0.02%
ROLE	0.01%
	100.00%

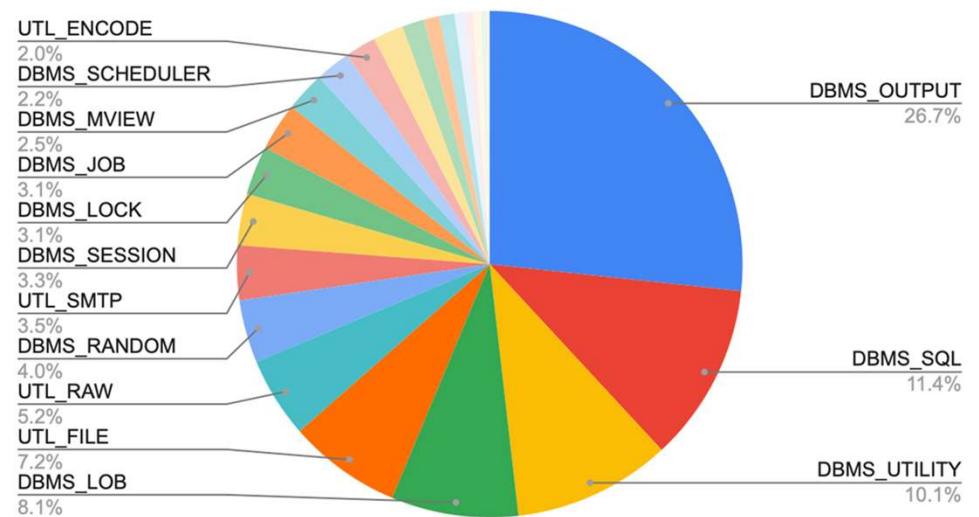
Oracle Compatibility Observations - Packages

Practical findings

- Based on over 18 million DDL constructs analyzed since January, 2019
- 14% of all schemas had at least one reference to PRAGMA AUTONOMOUS_TRANSACTION
- 14% of all schemas had at least one HINT
- 31% of all schemas referred to at least one of the EDB supported Oracle packages

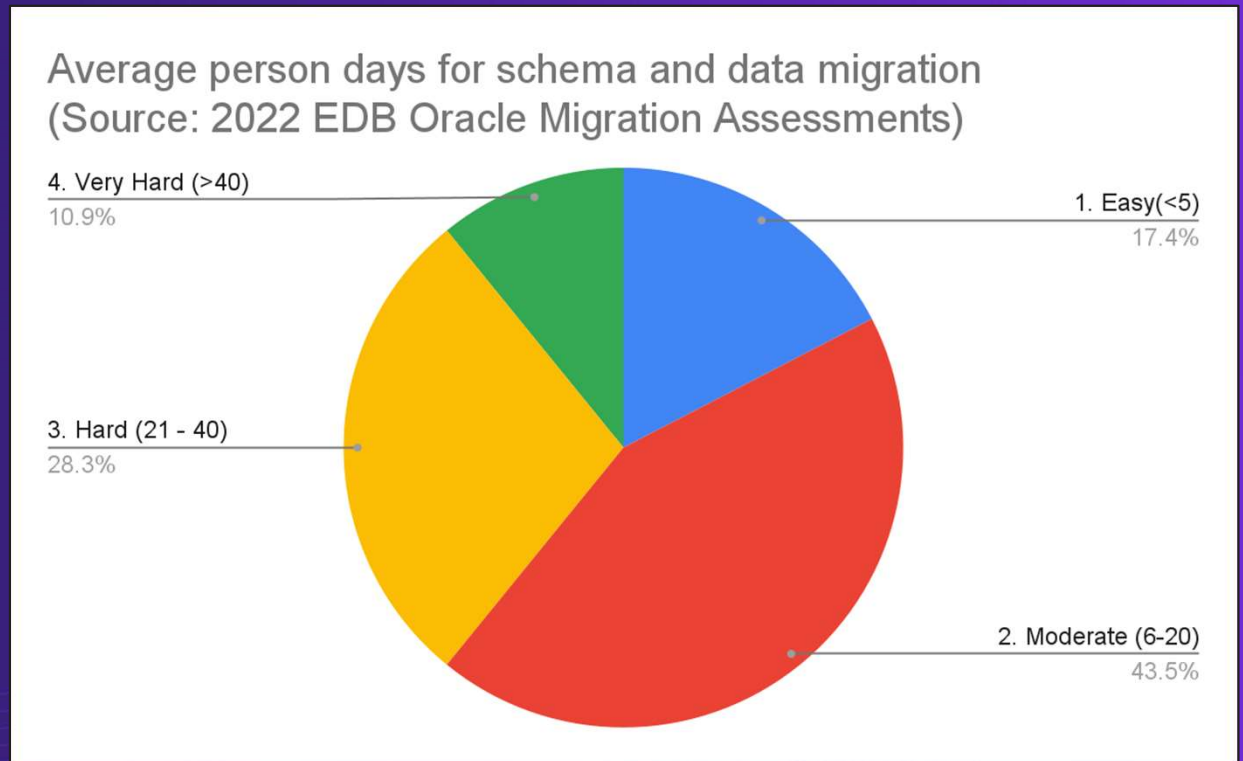
EDB's Oracle compatibility addresses practical challenges in Oracle migration

Frequency of EDB Supported Oracle Packages (2019-2022)



Oracle Compatibility Observations - Effort Assessment

- 61% of Oracle migrations to EDB Postgres are easy/moderate
 - < 20 person days of effort
 - Migrate schema and data
 - Leverage EDB Oracle Compatibility
- EDB BigAnimal w. Oracle Compatibility
 - Accelerates migration
 - Reduces infrastructure set up time (10-15 person days ⇒ 1 person day)

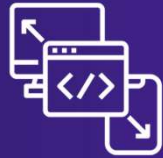


Why Choose BigAnimal

BigAnimal on AWS or Azure gives you the expertise and capabilities only EDB provides



Deep Postgres
Expertise



Compatible
with Oracle



Availability
Options



Cloud
Choice



Oracle SQL Developer

- Connect to Oracle
- Demo stored procedures
- Run Migration Portal DDL Extraction

EDB BigAnimal

- Managed Postgres Service
- Multi cloud and HA
- Native Oracle compatibility for Postgres

pgAdmin

- Connect to BigAnimal
- Demo stored procedures

EDB Replication Server

- Data replication Oracle/Postgres
- Snapshot
- Change data capture

Migration Example

- Oracle HR sample
- Enriched with Oracle Live
- Tables, data, stored procedures

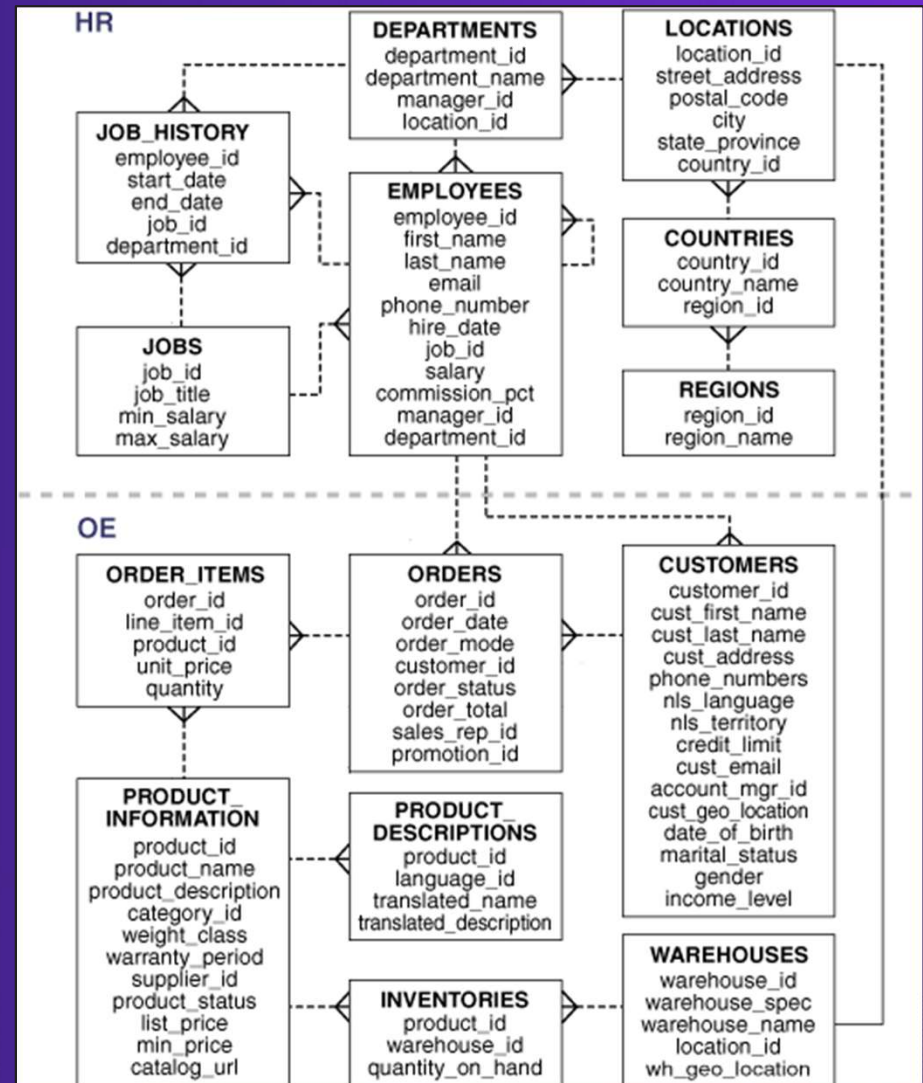
EDB Migration Portal

- Compatibility analysis
- Schema migration
- Stored procedure migration

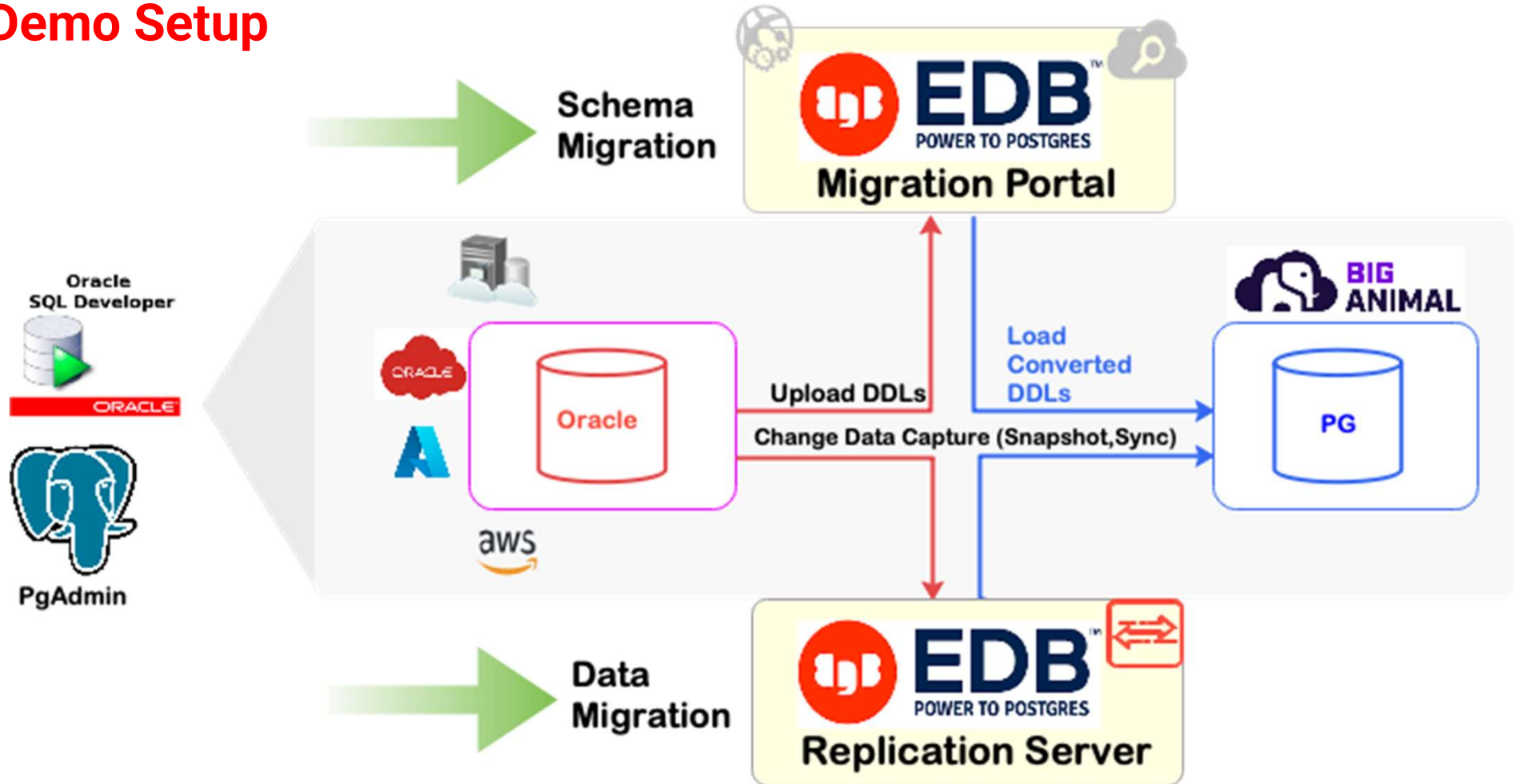


HR Schema

- Oracle standard example
- Source: https://livesql.oracle.com/apex/livesql/file/content_C1W23DSC9K441CR5RULGGBVW4.html



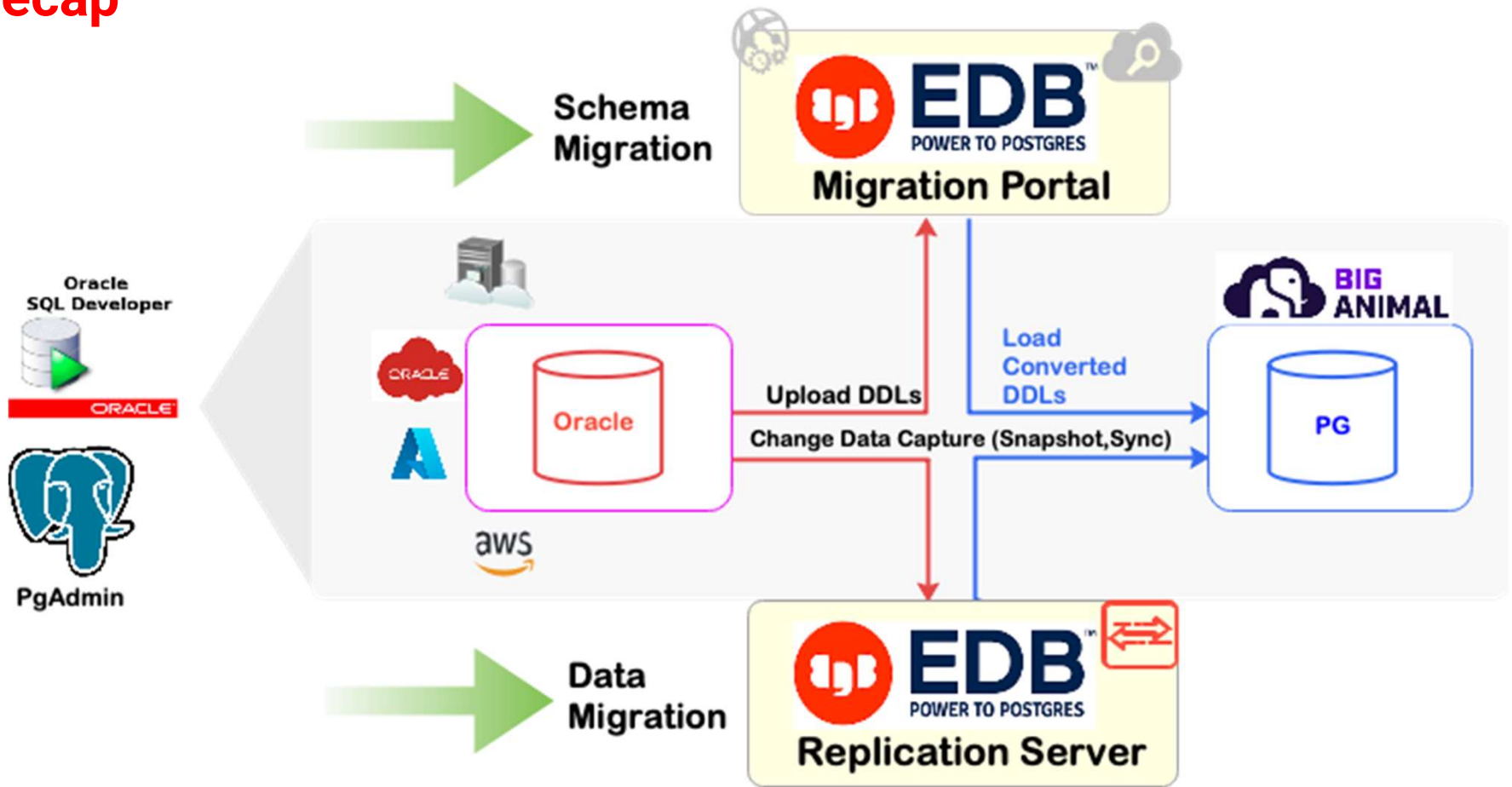
Demo Setup





DEMO

Recap



What makes a good migration candidate?



- ORM (Hibernate, Spring, etc.)

- Procedures, Functions, Packages written in PL/SQL



- Ability to modify source code

- Availability of Application Developers



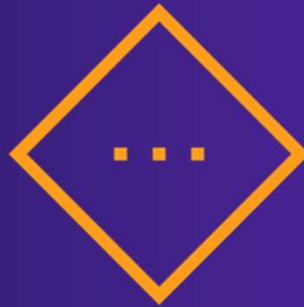
- No use of RAC for scalability

- No need for Flashback

Typically more difficult migration candidates



**BIG
ANIMAL**



Moderate candidates

- OCI interface
- Spatial/XML
- Oracle extensions of .NET and ODBC



Typically difficult candidates:

- ProC interface
- Transaction management control inside PL/SQL (Commit/rollback/savepoint/exceptions)
- Stored procedures written in Java
- Must have RAC capabilities and Flashback



Other Oracle proprietary extensions



Q&A

Resources

- [BigAnimal documentation](#)
- [EDB Postgres Advanced Server](#)
- [EDB Migration Portal](#)
- [The Complete Oracle to Postgres Migration Guide](#)
- [Oracle Aggressive Business Practices Drive Customers to Seek Alternatives](#)

